

# Setting Up

This is a step by step guide for first time users of the SPAA05-NEX and RAMIS software. It covers the basics steps of setting up the SPAA05-NEX tool correctly and starting a measurement. This also includes usage of the tilt accessory. \*

It is advised to charge the batteries of the equipment before use, as devices are not fully charged before new deliveries.

For information on how to use more specialized equipment like the Remote Display System and Laser Support System consult the seperate manuals for those products.

\*The tilt sensor is not delivered as standard which each SPAA05-NEX.

## Package Contents

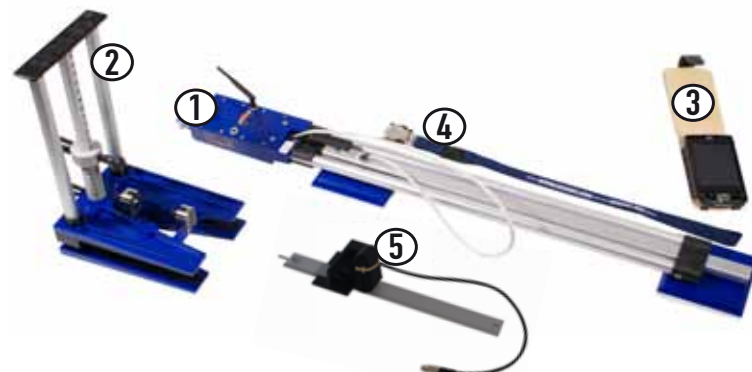
Open the package carefully, and make sure that none of the items listed are missing.

- SPAA05-NEX Antenna Alignment tool
- Universal antenna clamp
- On/Off Dongle with lanyard
- 110/220 Universal charger including car-charger lead
- Extra Bluetooth antenna (SPAA05)
- Soft carry case for SPAA05 for tower use
- Large hard case for SPAA05
- Small hard case for clamp
- Printed manual
- Printed software license
- CD-rom with software
- (found in the back of the printed manual)
- Hewlett Packard Touch-Screen PDA
- SD memory card
- PDA leather case
- PDA charger & manual
- 12V PDA car-charger
- Safety lanyard (3m)

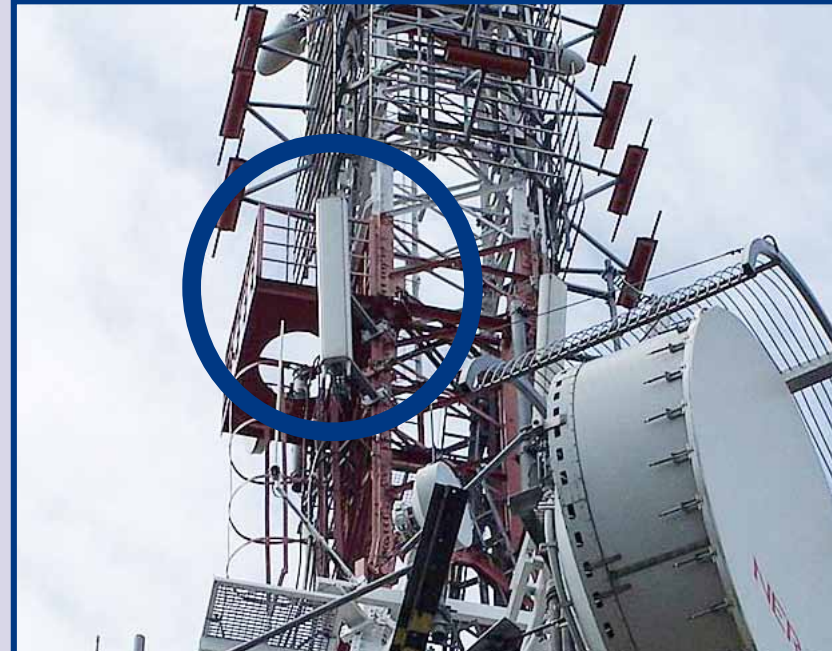
## Getting Started

Equipment needed and included with each new SPAA05-NEX unit are:

- SPAA05-NEX
- Universal Antenna Clamp
- PDA + RAMIS software
- On/Off Dongle
- Tilt Sensor



### Select the correct antenna



Access roof or tower and select the antenna you want to align.

### 2. Attach the antenna clamp



Pull out the knob to adjust the clamp width to fit the antenna.



Fit the clamp to the antenna by squeezing the black handles and sliding it over the antenna.



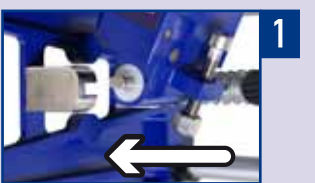
Make sure the clamp is fitted correctly! The side of the antenna must touch the clamp on both sides.



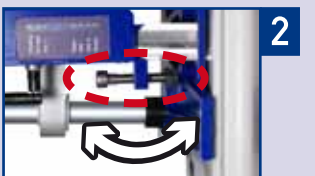
### 3. Attach the SPAA05-NEX



Hold the SPAA05-NEX tool under an angle and align the pins to slide into the clamp.



Carefully lower the tool.



Turn the adjustment screw to level the tool into an horizontal position.

### 4. Power on the SPAA05-NEX



Plug in the ON/OFF Dongle to turn on the SPAA05-NEX tool.



LEDs on top of the tool displays battery status.



The tool is ready for use if all LEDs on the side are on.



## 5. Extend the SPAA05-NEX



Adjusting Pull the handle and slide it outwards to extend the tool.

Push the handle back into place to lock.



## 6. Connect the Tilt Sensor



Plug in the tilt sensor connector to power on the tilt sensor.



Fitting the strap-on tilt sensor: Place the metal ruler on the back of the antenna.



Fasten the strap by pulling one of the holes over the pin, at the end of the ruler.

## Start Measuring

After setting up the SPAA05-NEX you can start measuring using the RAMIS software. The PDA supplied in the box has the software pre-installed.

This next section guides you through the main steps needed to make a measurement.

Take notice that it can take a couple of minutes before the SPAA05-NEX receives enough GPS data before a heading can be calculated. Also make sure that when making a Bluetooth connection you are in range of the SPAA05-NEX (30m/100ft).

You can consult the RAMIS Full Manual included with the SPAA05 tool, for more information on how to use the RAMIS software and on how to solve problems.

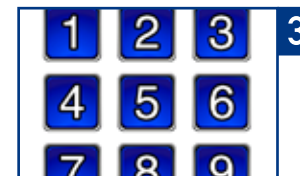
## 7. Starting RAMIS



Turn on the PDA.

Start up RAMIS program.

Login using the pin code. It is found on the back of the PDA or PDA leather case.



## 8. Connect to Bluetooth

### Bluetooth Settings

#### Port settings



Connect

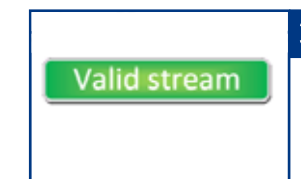
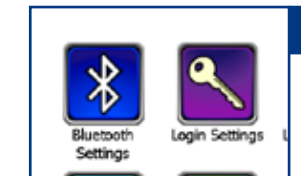
☐ Connect at startup

#### Radio Settings

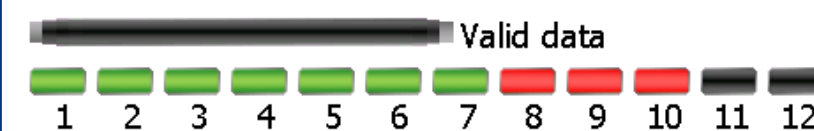
Go to Bluetooth settings.

Make a connection with your SPAA05-NEX tool.

Check connection!



## 9. Start Measurement



Target bearing

**120.0°**

Difference

**1.1°**

Grid North Bearing

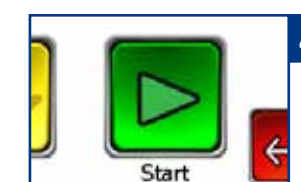
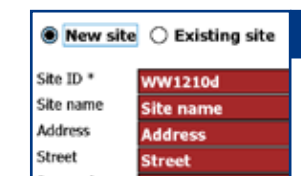
**121.1°**

Input site information in the site info screen.

Input target bearing.

Align antenna to target bearing.

Start Measurement.



## Contact

Main contact details:  
Kleiweg 24,  
5145 NB  
Waalwijk, the Netherlands  
E-mail: [info@spaa05.com](mailto:info@spaa05.com)

For a list of resellers and agents of SPAA05.com, please visit our website.  
[www.spaa05.com](http://www.spaa05.com)

**WARRANTY**  
SPAA05.com provides no warranty for this manual or RAMIS. Updates to this manual and to the RAMIS software will be available on our website. All SPAA05 equipment and measurement tools are warranted against defects in materials and workmanship for one year from the date of shipment. SPAA05's obligation covers repairing or replacing products which prove to be defective during the warranty period. Buyers shall prepay transportation charges for equipment returned to SPAA05 for warranty repairs. Obligation is limited to the original purchaser. SPAA05 is not liable for consequential damages. Limitation of warranty The foregoing warranty does not apply to SPAA05 equipment that have failed due to normal wear. Also, the warranty does not apply to defects resulting from improper or inadequate maintenance by the Buyer, unauthorized modification or misuse, or operation outside the environmental specifications of the product. No other warranty is expressed or implied, and the remedies provided herein are the Buyer's sole and exclusive remedies.

**DISCLAIMER**  
In no event shall SPAA05.com or contributors be liable for any direct, indirect, incidental, special, exemplary, or consequential damages (including, but not limited to, procurement of substitute goods or services; loss of use, data, or profits; or business interruption) however caused and on any theory of liability, whether in contract, strict liability, or tort (including negligence or otherwise) arising in any way out of the use of this software and/or hardware, even if advised of the possibility of such damage. Personnel must be properly qualified for use of SPAA05 equipment and also be familiar with relevant national and local safety regulations. It is always up to the expertise of the user of the RAMIS software or/and SPAA05 equipment to determine if it is safe to use mentioned products at any given time. In no event shall SPAA05.com or contributors be liable for any direct, indirect, incidental, special, exemplary, or consequential damages (including, but not limited to injury or death) in any way out of not following the required safety regulations, even if advised of the possibility of such damage. In no event shall SPAA05.com or contributors be liable for any direct, indirect, incidental, special, exemplary, or consequential damages (including, but not limited to injury or death) in any way out of the use of this equipment, even if advised of the possibility of such damage.