

SPAA05.COM

## UNIVERSAL DATA-TRANSLATOR MANUAL

## CONTENTS

Universal data-translator software.....	1
1. Read, decrypt and convert .....	1
2. Import and Export data .....	2
3. locate and visualise.....	2
4. Online Update .....	3
5. Upgrade licence .....	3
How to use.....	4
1. Installation .....	4
2. General program information .....	4
3. Program functions .....	5
1. Tabs .....	5
2. Load.....	6
3. Remote Load .....	6
4. File.....	7
System Requirements.....	8
Credit Notice.....	9

## UNIVERSAL DATA-TRANSLATOR SOFTWARE

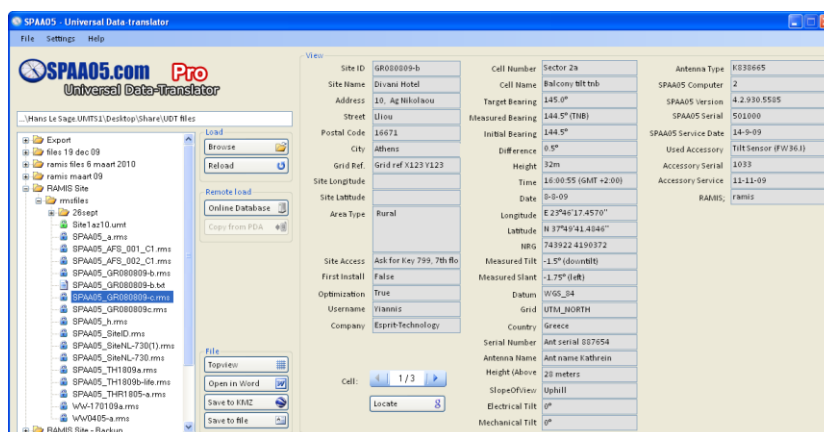
The Universal Data-translator is developed alongside our new measurement software RAMIS. The UDT, a desktop program, supports every measurement file made by any version of the PDA measurement software. The program can read, decrypt and export files to a printable format, as well as locate the sites and apply time zone and datum/grid conversions to it.

Some features shown in this manual may be locked depending on which version is used. We have developed the Data-translator to start as a free-to-use Lite version. The UDT can then be upgraded to a Full or Pro version, by purchasing an Activation Code from a distributor. For a list of features available to each version, see the table below.

	Lite	Full	Pro
SPAA05 PDA file support	V	V	V
SPAA05 RAMIS file support		V	V
Text file support			V
Microsoft Word export	V	V	V
Google Maps locate	V	V	V
Timezone conversions	V	V	V
Datum/Grid conversions		V	V
Google Earth KMZ export			V
Topview			V
Save as text			V

### 1. READ, DECRYPT AND CONVERT

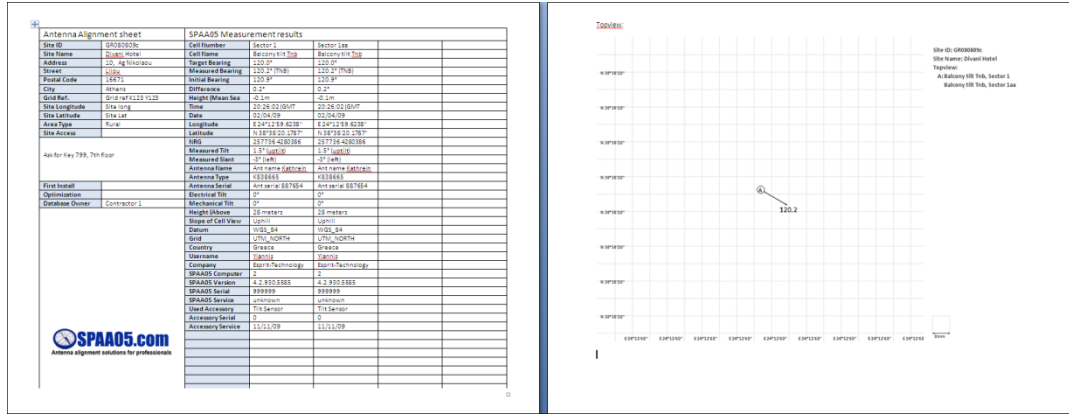
The first and foremost function of the Universal Data-translator is that it can read .rms measurement files and decrypt .umt files stored locally **and** from the RAMIS online database. It also allows for conversion of Datum and X/Y coordinates, to different grids. Changing measured data is **not** possible with the software!



Program displaying measurement information

## 2. IMPORT AND EXPORT DATA

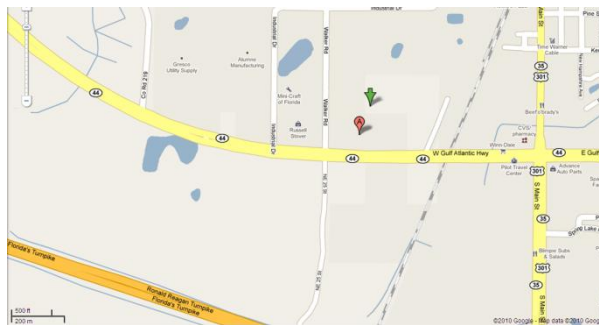
All measurement data can easily be exported to printable format. Supported formats include .doc, .xml and .txt. Implementation of new formats is under development.



Printable report sheet

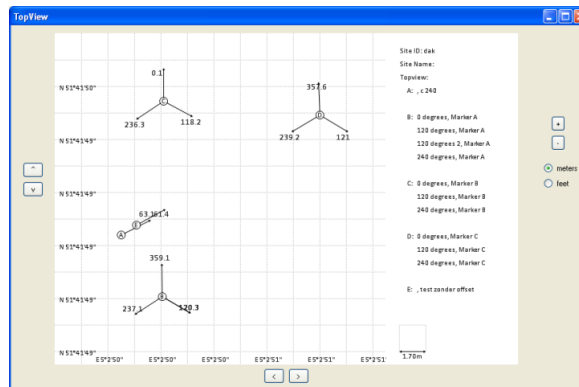
## 3. LOCATE AND VISUALISE

The software can locate and show the position of the site with GOOGLE Maps®. This makes it easy to check if the measurements were indeed taken at the right site.



Site location in Google Maps™ mapping service

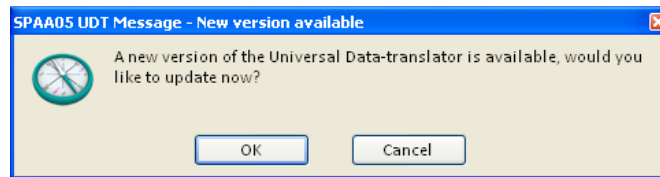
The **Topview** functionality makes a graphical projection of the site, actually displaying the site's antennas and headings. These topviews can be added to each report.



Topview showing antenna positions and heading

#### 4. ONLINE UPDATE

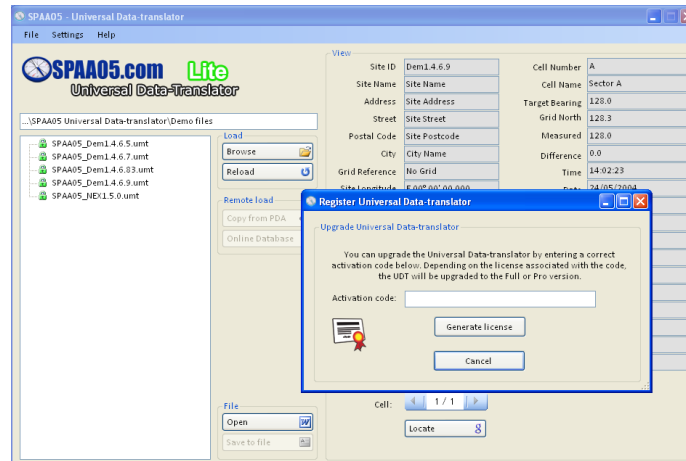
Universal Data-Translator automatically searches for updates. Updates can include new functionality and optimizations. Every new version is tested for stability issues and bugs. Updating will not change any settings.



*The UDT automatically detects if new updates are available*

#### 5. UPGRADE LICENCE

The license version of the software can be changed without need to download. Only an activation code is needed to upgrade. Activation codes are provided by **SPAA05** distributors and agents.



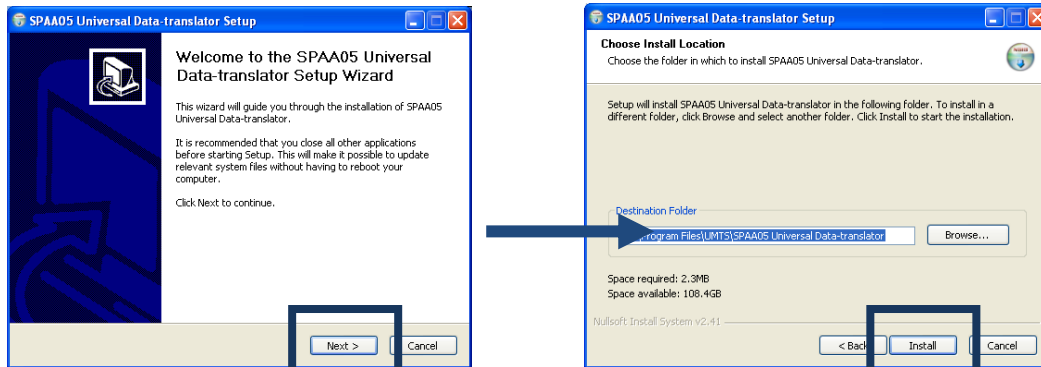
*Change version from Lite to Full or Pro*

## HOW TO USE

This section will cover installation and usage of the program.

### 1. INSTALLATION

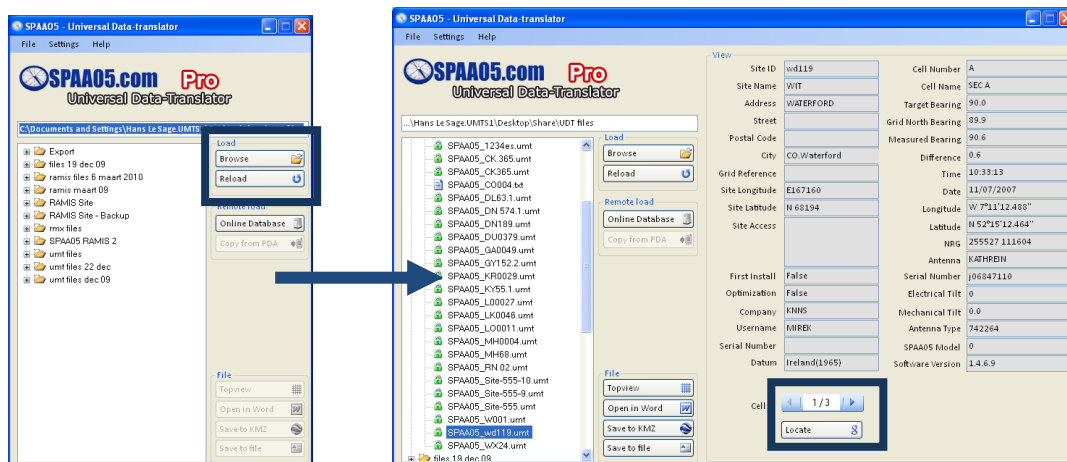
Install the software by opening the file **“UDT.exe”**. Follow the instruction on screen to complete the installation.



Installation just takes a minute

### 2. GENERAL PROGRAM INFORMATION

After starting up the program, browse to a folder containing site measurement files. To do this, simply press the browse button located on the right. After selecting the folder click on a file and it will automatically load, showing the measurement details.

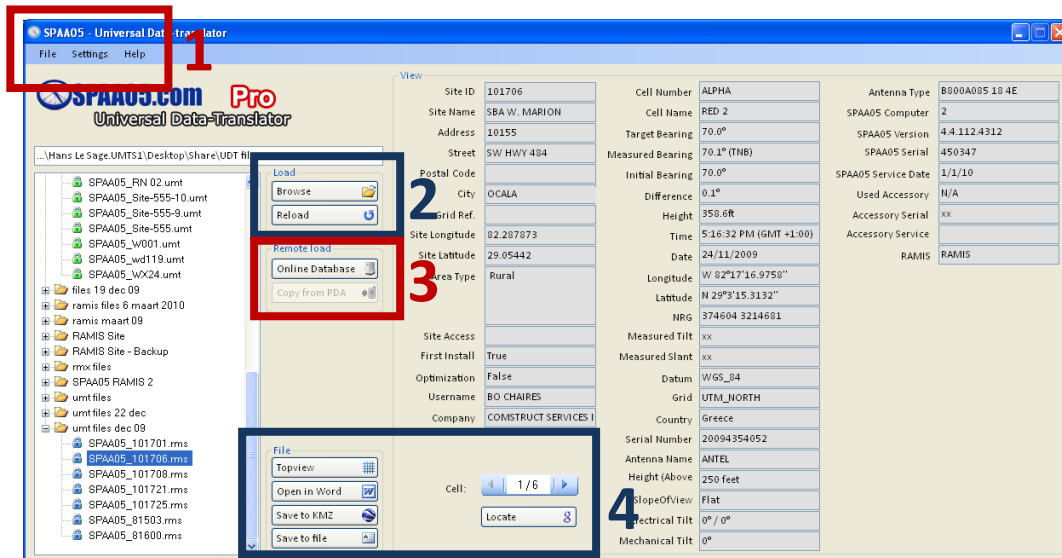


Left picture shows the startup window. The right picture shows the details of the selected measurement file.

Press on the arrows underneath the measurement details to cycle through the individual measurements saved in the file.

### 3. PROGRAM FUNCTIONS

This section will cover the use of the functions available in the Universal Data-translator software. Descriptions will be short as most of it is self-explanatory.

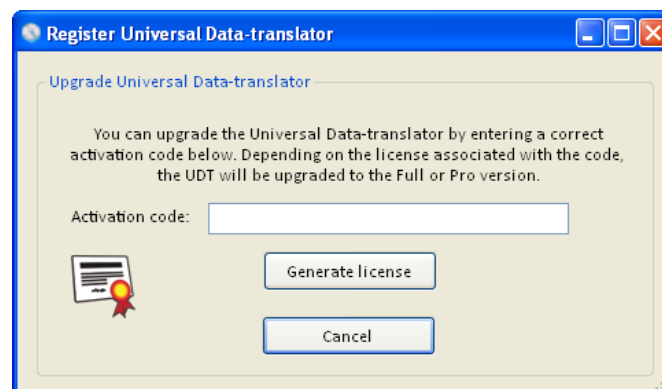


Available functions divided in four sections

#### 1. TABS

##### File

- **Load Directory:** Click here to browse to a local folder containing measurement files.
- **Reload:** Click here to reload the current folder to view newly placed files.
- **License Upgrade:** Input the activation code and press **“Generate licence”** to upgrade to Full or Pro version. The code is bound to the hardware of the PC, meaning that the particular code can only upgrade a limited number of times.



Upgrade activation window

- **Check for updates:** Click here to search for new updates. If a new version is found, manual permission is needed to perform the update. After the download has finished the installer will start



Update available message

Settings:

- **General:** Select which file types are shown in the browser window. Import settings and the Display language function are also found here. The language selected in the latter will be used in the reports.
- **Coords:** Select in what format the coordinates are shown and what grid and datum is used. This converts the data in the measurements to the new format. The measurement files themselves remain unaltered.
- **Timezone:** Select which time zone is used.

Help:

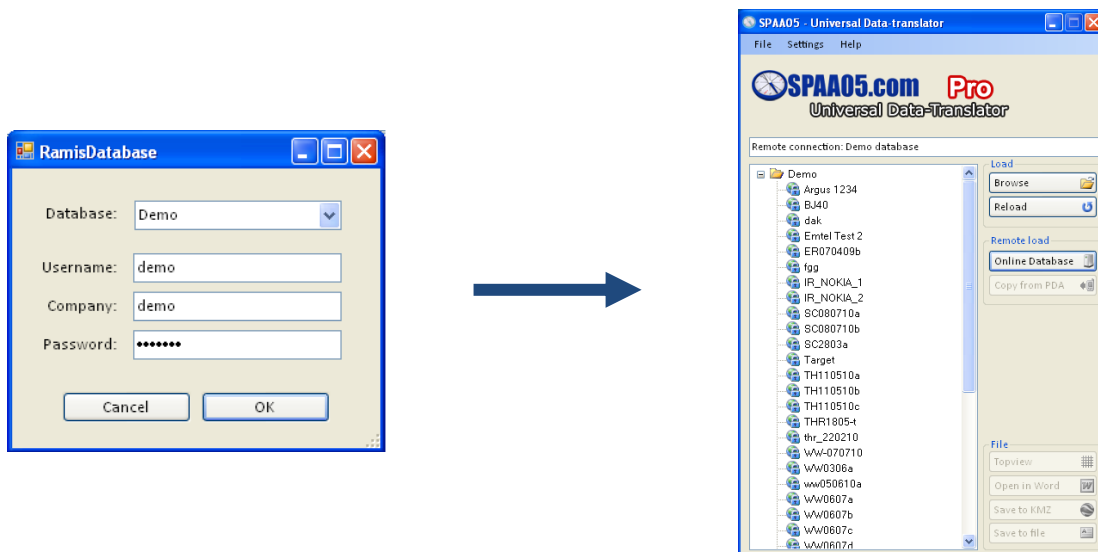
- **Help:** Click here to load the latest UDT manual.
- **About:** Click here to view version and license information.

2. LOAD

- **Browse:** Click here to browse to a local folder containing measurement files. This also loads subfolders containing measurement files.
- **Reload:** Click here to reload the current folder to view newly placed files.

3. REMOTE LOAD

- **Online Database:** Click here to browse to measurements stored in a RAMIS online database. A popup will show up where Database, Username, Company and Password have to be entered. When login is successful measurements located in the database are shown.



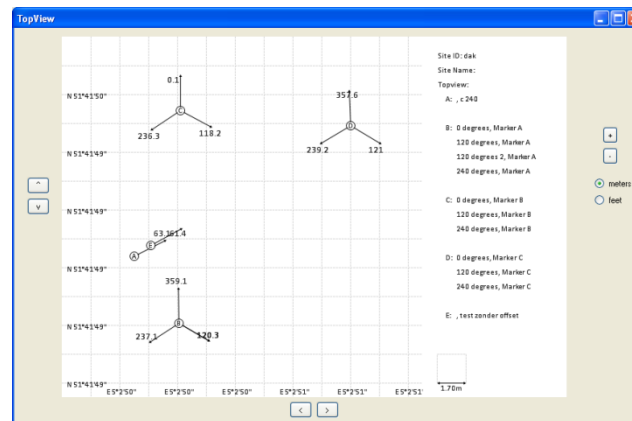
RAMIS Database login screen (left). Measurements accessible from the database (right)



- **Copy from PDA:** Click here to automatically copy all the measurement files stored on the PDA into the UDT. This will not delete the files located on the PDA.

#### 4. FILE

- **Topview:** Click here to display the top view of the selected site. A new window will show a grid with antenna positions and headings. Double-click anywhere in the window to centre the view to that spot. Zoom in using the “+” and “-” buttons on the right.



Topview of a site measurement. Antennas are displayed as circles

- **Open in Word:** Click here to export the site measurement to a printable file type. After exporting is completed this will automatically open the file with the appropriate program. Note that these files are no longer encrypted.
- **Save to KMZ:** Click here to display the location of the site measurement in Google Earth™ mapping service.
- **Save to file:** Click here to export the site measurement to the .txt file type.
- **Locate:** Click here to view the location of the site measurement in Google Maps™ mapping service

## SYSTEM REQUIREMENTS

### Minimum System Requirements

- Intel® Pentium® 4 or AMD Athlon® 64 processor
- Microsoft® Windows® XP with Service Pack 2 (Service Pack 3 recommended); Windows Vista® Home Premium, Business, Ultimate, or Enterprise with Service Pack 1; or Windows 7
- Microsoft® .NET Framework 3.5
- 512MB of RAM (1GB recommended)
- 4MB of available hard-disk space for installation; additional free space required during installation (cannot install on removable flash-based storage devices)
- Broadband Internet connection required for online services\*

## CREDIT NOTICE

### Copyright Notice

**SPAA05.com** has prepared this manual for use by **SPAA05.com** personnel and customers as a guide for the proper installation, operation and maintenance of **SPAA05** equipment and computer programs. The drawings, specifications, and information contained herein are the property of **SPAA05.com**, and any unauthorized use or disclosure of these drawings, specifications, and information is prohibited; they shall not be reproduced, copied, or used in whole or in part as the basis for manufacture or sale of the equipment or software programs without the prior written consent of **SPAA05.com**.

### Trademarks

The **SPAA05** logo, **SPAA05**®, **RAMIS**® and **RAAM**® are trademarks of **SPAA05.com**. Google Maps™ and Google Earth™ mapping services are trademarks of Google Inc. in the United States and/or other countries.

### Links

**SPAA05** Website:

<http://www.SPAA05.com>

**SPAA05** Universal Data-translator:

<http://www.SPAA05.com/udt/>

RAMIS online database portal:

<http://ramis.SPAA05.com>

### Contact

For a list of resellers and agents of **SPAA05.com**, please visit our website. Main contact details:

**Kleiweg 24,**

**5145 NB**

**Waalwijk, the Netherlands**

**Telephone: +31 416 565 005**

**Fax: +31 416 565 006**

**E-mail: [info@spaa05.com](mailto:info@spaa05.com)**